



# The Pilot House

1048 Airport Way,  
Arden

MLS® 40594599

Joel@LakeDistrictRealty.com

Welcome to 1048 Airport Way, Arden ON. Enjoy this inviting country finished home or 4 season cottage, sitting on approximately 45 acres of land. If you are looking to move to a rural setting or enjoy a city get away, this one of a kind property could be what you are looking for. The building has been nicely renovated and has a great country/cottage flare to it and is quite comfy cozy. On the property you will find, just a short walk through the nature trail, a beautiful stream leading to a scenic waterfall. The property is in an area of cottage properties, you are not far to put a boat in the water at the public launch or enjoy the public beach on Kennebec Lake. This property can be purchased with partial ownership of the private and not too heavily used airstrip known as the Baker Valley Aerodrome. Located just 15 minutes west of the full service village of Sharbot lake, 1 hour to Belleville or Kingston, 1 hour 30 minutes to Ottawa or 2 hours 30minutes to the GTA.



**\$399,000**

*List Price*

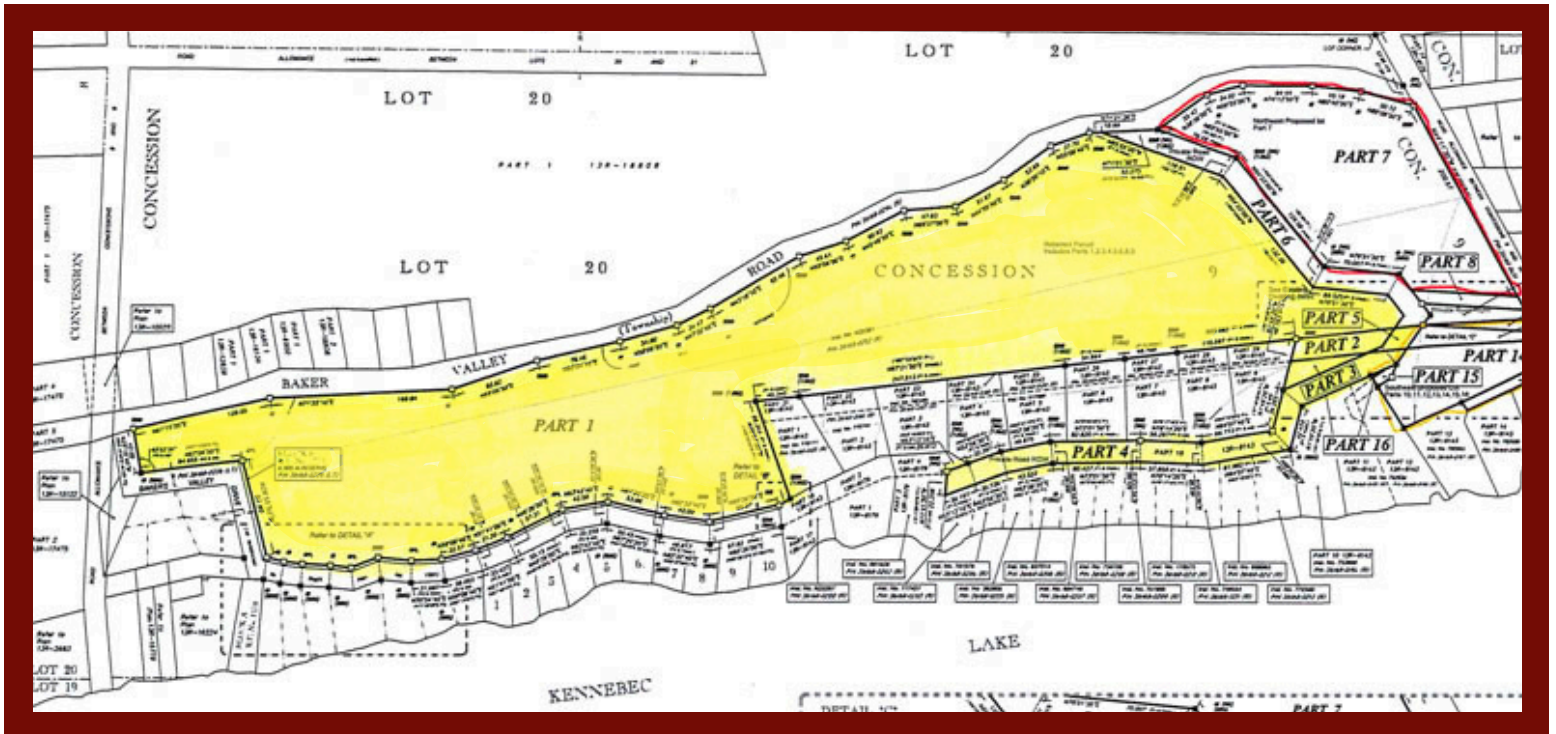
**45 Acres**

**873sqft**

**3 Beds, 1 Bath**

**\$1192.89**

*List Price*



## FEATURES

- Picture this: a sprawling 45-acre property boasting a scenic nature trail winding along a babbling stream that ends in a stunning waterfall.
- Calling all aviation buffs! Discover a private runway ready for use right on the premises.
- Situated a stone's throw away from Kennebec Lake, dive into the fun at the public beach, set sail on your boat, and soak up a day of watery bliss. Enjoy all the perks of a cozy cottage minus the sky-high waterfront taxes.

## THE LAKE

Kennebec Lake is located in the beautiful Land O' Lakes region in Southeastern Ontario. Kennebec Lake is a 13 km long lake and is surrounded by many other beautiful lakes for the adventurous cottager & nature enthusiast. Kennebec Lake offers excellent fishing for the avid fisherman. Common fish found in Kennebec Lake are Largemouth & Smallmouth Bass, Northern Pike & Walleye. Arden, ON is conveniently located only 20 minutes to the Village of Sharbot Lake for all your shopping requirements.

## CONTACT DETAILS

14202 Road 38, Sharbot Lake, ON

✉ Joel@LakeDistrictRealty.com

✉ info@LakeDistrictRealty.com

🌐 www.LakeDistrictRealty.com

☎ 613-279-2108

