



THE WATERFRONT COMPANY™ PRESENTS

Beautifully Treed Parcel



**0 Road 509, Sharbot Lake
\$95,900.00**

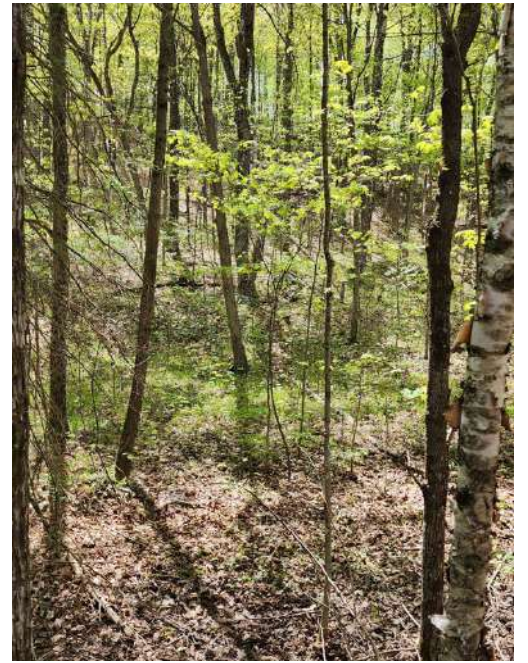
**Annette@LakeDistrictRealty.com
MLS® 40401878**

LOT SIZE	TAXES	WATER FRONTAGE	ZONING	ACCESS	SURVEY
≈ 6.58 Acres	\$308/2023	N/A	Residential	Municipal Road	Not on File

This beautiful, well-treed 6.5-acre parcel would make an affordable getaway to enjoy nature. Beautifully treed with mature forest, this parcel has a large rock ridge providing great views from the top. A great location to create your own personal getaway or year-round home. Located near the K&P multi-use trail for recreation and easily accessible to a multitude of lakes with great fishing and swimming. A quick 5 minutes and you are in the village of Sharbot Lake where you will find, restaurants and gas, grocery, liquor, beer, and hardware stores as well as a pharmacy, bank, and medical center.

DIRECTIONS	From Kingston north on Rd 38 towards Sharbot Lake, Left at Hwy 7, Right on Road 509 for 7kms, property located at the corner of Penyck Lake Lane and Road 509.
INCLUSIONS	Contact Brokerage for Full List.
EXCLUSIONS	Contact Brokerage for Full List.
LEGAL	OSO CON 3 PT LOT 25
LISTING BROKERAGE	Lake District Realty Corporation, Brokerage - THE WATERFRONT COMPANY™
SALESPERSON	Annette Gray-Jackson SB COMM 2%

Lake District Realty Corporation gathers data from Vendors Disclosure Forms and other public sources for your information. Purchasers should satisfy themselves on any details they consider important. We encourage you to commission experts to examine a property for you prior to your submitting an Offer of Purchase and Sale.



Satellite Image

